

CircularX



Table of Contents

	Introduction
2	Indications
2	Advantages
3	Components
15	Instruments
16	Pediatric Components
19	Circular Fixator EF-01 Set List
25	Pediatric Circular Fixator EF-13 Set List

Warning

This description is not sufficient by itself for direct and proper use of the instrument set intraoperatively.

Instruction by a surgeon who is thoroughly trained and experienced in handling these instruments and in doing the procedure are highly recommended.





Introduction

Indications

- * Lengthening, extremity lengthening
- * Closed and open fractures
- * Bone loss (trauma tumor, infection)
- * HIP dysplasia and deformity corrections are some of the indications

Advantages

- * Anatomical fracture reductions are provided not only on the fresh fractures even on few weeks or months old fractures
- * Endless possibilities of fracture fixation
- * Minimal trauma of the soft tissue
- * Closed fracture area
- * Optimal bio mechanic stability
- * Reconstruction of wide bone defects and acute or gradual correction of deformities
- * Early joint movement
- * Protecting the blood circulation of the bone
- * Minimal bleeding during the surgery

Components



Half Ring Al Alloy

Code	Barcode	Size	Amount
50140000008	8698673452121	80 mm	8
50140000010	8698673452138	100 mm	8
50140000011	8698673452145	110 mm	*
50140000012	8698673452152	120 mm	8
50140000013	8698673452169	130 mm	*
50140000014	8698673452176	140 mm	8
50140000015	8698673452169	150 mm	*
50140000016	8698673452190	160 mm	8
50140000017	8698673452206	170 mm	*
50140000018	8698673452213	180 mm	8
50140000020	8698673452220	200 mm	8
50140000022	8698673452237	220 mm	8
50140000024	8698673452244	240 mm	*



C Ring (5/8) Al Alloy

Code	Barcode	Size	Amount
50240000080	8698673450011	80 mm	1
50240000010	8698673450028	100 mm	1
50240000011	8698673450035	110 mm	*
50240000012	8698673450042	120 mm	1
50240000013	8698673450059	130 mm	*
50240000014	8698673450066	140 mm	1
50240000015	8698673450073	150 mm	*
50240000016	8698673450080	160 mm	1
50240000017	8698673450097	170 mm	*
50240000018	8698673450103	180 mm	1
50240000020	8698673450110	200 mm	1
50240000022	8698673450127	220 mm	1
50240000024	8698673450134	240 mm	*



Half Ring Carbon Fiber

Code	Barcode	Size	Amount
50160000008	8698673448339	80 mm	*
50160000010	8698673452251	100 mm	8
50160000012	8698673452268	120 mm	8
50160000013	8698673452275	130 mm	*
50160000014	8698673452282	140 mm	8
50160000015	8698673452299	150 mm	*
50160000016	8698673452305	160 mm	8
50160000017	8698673452312	170 mm	*
50160000018	8698673452329	180 mm	8
50160000020	8698673452336	200 mm	8
50160000022	8698673452343	220 mm	8
50160000024	8698673452350	240 mm	8



C Ring (5/8) Carbon Fiber

Code	Barcode	Size	Amount
50260000008	8699931014303	80 mm	*
50260000010	8698673450141	100 mm	1
50260000012	8698673450158	120 mm	1
50260000014	8698673450165	140 mm	1
50260000016	8698673450172	160 mm	1
50260000018	8698673450189	180 mm	1
50260000020	8698673450196	200 mm	1
50260000022	8698673450202	220 mm	1
50260000024	8699931014310	240 mm	*



Femoral Arches (Carbon Fiber)

Code	Barcode	Angle X Dia.	Amount
50460900018	8698673485662	90° X 180 mm	*
50460120018	8698673485655	120° X 180 mm	*
50460900020	8698673451858	90° X 200 mm	*
50460120020	8698673451834	120° X 200 mm	*
50460900025	8698673451865	90° X 250 mm	*
50460120025	8698673451841	120° X 250 mm	*



Femoral Arches (S. Steel)

Code	Barcode	Angle X Dia.	Amount
50450600020	8699931012682	60° X 200 mm	1
50450900020	8698673451810	90° X 200 mm	1
50451200020	8698673451773	120° X 200 mm	1
50450600025	8699931012699	60° X 250 mm	1
50450900025	8698673451827	90° X 250 mm	1
50451200025	8698673451780	120° X 250 mm	1



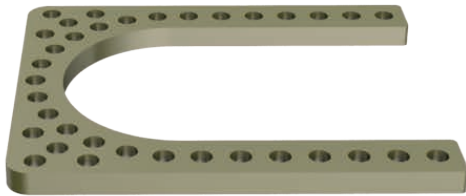
Telescopic Rod (Graduated)

Code	Barcode	Length	Amount
50840500000	8698673454262	50 mm	4
50840100000	8698673454217	100 mm	4
50840150000	8698673454231	150 mm	4
50840200000	8698673454248	200 mm	*
50840250000	8698673454255	250 mm	*



Foot Ring (Carbon Fiber)

Code	Barcode	Size	Amount
50380000010	8698673451919	100 mm SHORT	*
50380001010	8698673451902	100 mm LONG	*
50380000012	8698673451933	120 mm SHORT	*
50380000013	8698673451940	130 mm SHORT	*
50380000014	8698673451964	140 mm SHORT	*
50380001014	8698673451957	140 mm LONG	*
50380000016	8698673451988	160 mm SHORT	*
50380000116	8698673451971	160 mm LONG	*
50380000018	8698673452008	180 mm SHORT	*



Foot Ring

Code	Barcode	Size	Amount
50340000010	8698673451872	100 mm	*
50340000012	8698673451889	120 mm	*
50340000013	8698673451896	130 mm	*
50340000014	8698673457409	140 mm	*
50340000016	8698673457393	160 mm	*



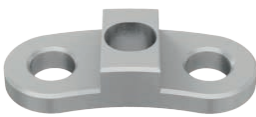
Omega Ring

Code	Barcode	Size	Amount
50341000010	8698673453791	100 mm	*
50341000012	8699931008982	120 mm	*
50341000013	8699931008999	130 mm	*
50341000014	8698673453807	140 mm	*
50341000015	8699931009002	150 mm	*
50341000016	8698673453814	160 mm	*



Connection Plates

Code	Barcode	Hole	Amount
50950380002	8698673450943	2	2
50950490003	8698673450950	3	2
50950600004	8698673450967	4	2
50950710005	8698673450974	5	2
50950820006	8698673450981	6	2
50950930007	8698673450998	7	2
50951040008	8698673451001	8	2
50951150009	8698673451018	9	2
50951260010	8698673450936	10	2



Curved Plates Al Alloy

Code	Barcode	Hole	Amount
50140000030	8680858419029	3	*



Connection Plates with Threaded End

Code	Barcode	Hole	Amount
51151310005	8698673451124	5	3
51151710007	8698673451131	7	3
51152110009	8698673451148	9	3
51152510011	8698673451117	11	3



L Plates

Code	Barcode	Hole	Amount
51350450012	8698673453470	2	3
51350700013	8698673453487	3	3
51350700014	8698673453494	4	3



Twisted Plates

Code	Barcode	Hole	Amount
51450250001	8698673456921	1	2
51450460002	8698673456938	2	2
51450670003	8698673456945	3	2
51450880004	8698673456952	4	2



Threaded Rods

Code	Barcode	Length	Amount
50550040006	8698673454279	40 mm	*
50550050006	8699931026245	50 mm	*
50550060006	8698673454286	60 mm	9
50550080006	8698673454293	80 mm	9
50550100006	8698673454309	100 mm	9
50550120006	8698673454316	120 mm	9
50550130006	8698673454323	130 mm	*
50550150006	8698673454330	150 mm	12
50550200006	8698673454347	200 mm	9
50550250006	8698673454354	250 mm	9
50550300006	8698673454361	300 mm	9
50550400006	8698673434790	400 mm	*



Slotted Rods

Code	Barcode	Length	Amount
50650040006	8698673453913	40 mm	*
50650050006	8698673453920	50 mm	*
50650060006	8698673453937	60 mm	*
50650080006	8698673453944	80 mm	*
50650100006	8698673453951	100 mm	*
50650120006	8698673453968	120 mm	*
50650150006	8698673453975	150 mm	*



Cannulated Threaded Rods

Code	Barcode	Length	Amount
50750040006	8698673412262	40 mm	*
50750060006	8698673412279	60 mm	*
50750080006	8698673412286	80 mm	*
50750100006	8698673412293	100 mm	*
50750120006	8698673412309	120 mm	*
50750150006	8698673412316	150 mm	*



Half Pin Supporting Cubes

Code	Barcode	Hole	Amount
51950000701	8698673452053	1	2
51950000702	8698673452060	2	2
51950000703	8698673452077	3	2
51950000704	8698673452084	4	2
51950000705	8699931012408	5	2
51950000706	8699931013504	6	2



Long Connection Plates

Code	Barcode	Hole	Amount
51051590008	8698673453586	8	2
51052360012	8698673453548	12	2
51053360017	8698673453555	17	2



Oblique Support Connector

Code	Barcode	Type	Amount
51250000001	8698673453715	Short	4
51250000003	8698673453722	Medium	4
51250000002	8698673453708	Long	4
51250000012	8699931012675	Xlong	4



Male Support

Code	Barcode	Hole	Amount
52550000001	8698673453609	1	8
52550000002	8698673453616	2	8
52550000003	8698673453623	3	4
52550000004	8698673453630	4	4
52550000005	8699931012620	5	4
52550000006	8699931012637	6	4



Female Support

Code	Barcode	Hole	Amount
52650000001	8698673451711	1	8
52650000002	8698673451728	2	8
52650000003	8698673451735	3	4
52650000004	8698673451742	4	4
52650000005	8699931012644	5	4
52650000006	8699931013528	6	4



Translation Rotation Block

Code	Barcode	Amount
52050009005	8698673454507	3



Trans-Angled Pin Fixation Bolt

Code	Barcode	Type	Length	Amount
52051004000	8699931006452	Threaded	40 mm	3
52051005000	8699931006469	Threaded	50 mm	*
52052000040	8699931020403	Polygonal	40 mm	3
52052000050	8699931006445	Polygonal	50 mm	*



Polyaxial Pin Fixation Bolt

Code	Barcode	Type	Length	Amount
41511000040	8699931013511	Threaded	40 mm	3
41511000050	8699931012651	Threaded	50 mm	*
41512000040	8699931012422	Polygonal	40 mm	3
41512000050	8699931012668	Polygonal	50 mm	*



Hexagonal Pin Fixator Bolte Single

Code	Barcode	Amount
51950000600	8698673452091	3



Special Pin Fixator Bolt (Serrated)

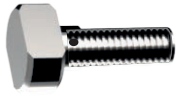
Code	Barcode	Amount
51950000500	8698673453999	10

Multiple Pin Fixation Bolt

Code	Barcode	Amount
51950000100	8698673453685	1

Universal Pin Fixation Bolt With Four

Code	Barcode	Amount
51950000200	8698673456976	1



Cannulated Bolt Wire Fixation

Code

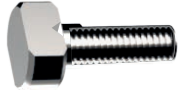
51950000901

Barcode

8698673411913

Amount

50



Slotted Bolt Wire Fixation

Code

51950000902

Barcode

8698673453906

Amount

30



Teflon Nut M6

Code

51750000206

Barcode

8698673454200

Amount

80



Nut M6

Code

51850000106

Barcode

8698673453692

Amount

100



Threaded Sockets

Code

52750200001

Barcode

8698673454378

Amount

4



Threaded Sockets Long

Code

52750200011

Barcode

8698673454385

Amount

4



Quadrangular Nut

Code	Barcode	Type	Amount
51850000406	8698673453838	SHORT	4
51850000206	8698673453821	LONG	*



Half Hinge 90°

Code	Barcode	Amount
52950900002	8699931028362	4



Universal Half Hinge

Code	Barcode	Amount
52650000200	8698673456969	4

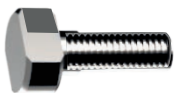
Multiple Angled Universal Half Hinge

Code	Barcode	Amount
52650000300	8698673453678	4



Schanz Adaptor

Code	Barcode	Type	Amount
51850000504	8698673458994	Ø 4 MM	*
51850000505	8698673458987	Ø 5 MM	5
51850000506	8698673453845	Ø 6 MM	5



Bolt

Code	Barcode	Length	Amount
52150120006	8698673450295	12 mm	50
52150160006	8698673450301	16 mm	50
52150200006	8698673450318	20 mm	50
52150240006	8698673450325	24 mm	*
52150300006	8698673450332	30 mm	*



Conical Couple

Code

51750000716

Barcode

8698673450912

Amount

20



Conical Washer

Code

51750000616

Barcode

8698673450929

Amount

20



Washer

Code

51750000216

Barcode

8698673456983

Amount

100



Serrated Washer

Code

51750000116

Barcode

8698673453876

Amount

70



Special Washer

Code

51750000416

Barcode

8698673454019

Amount

20



Bushing

Code

52750000002

Barcode

8698673450639

Amount

5



Slotted Washer

Code

51750000516

Barcode

8698673453982

Amount

20



Hybrid Connection Clamp

Code	Barcode	Amount
40140020300	8698673452114	3

Schanz Pin Cancellous Threaded

Code	Barcode	Dia. X Thread size X Len.	Amount
21010153005	8698673454866	5 X 30 X 150 mm	5
21010504005	8698673454873	5 X 40 X 150 mm	5
21010154006	8698673425002	5 X 40 X 160 mm	5
21010804005	8698673454880	5 X 40 X 180 mm	5
21012004005	8698673454897	5 X 40 X 200 mm	5
21010224005	8698673454903	5 X 40 X 220 mm	5
21010504006	8698673454989	6 X 40 X 150 mm	5
21010604006	8698673458413	6 X 40 X 160 mm	5
21010804006	8698673454996	6 X 40 X 180 mm	5
21012004006	8698673455009	6 X 40 X 200 mm	5
21012204006	8698673455016	6 X 40 X 220 mm	5

Schanz Pin

Code	Barcode	Dia. X Thread size X Len.	Amount
20910150205	8699931024937	5 X 20 X 150 mm	5
20910160205	8699931024944	5 X 20 X 160 mm	5
20910180205	8699931024951	5 X 20 X 180 mm	5
20910204005	8698673456228	5 X 40 X 200 mm	5
21011502006	8699931013917	6 X 20 X 150 mm	5
21011602006	8699931013924	6 X 20 X 160 mm	5
21011802006	8699931013931	6 X 20 X 180 mm	5

Schanz Pin Cortical Threaded

Code	Barcode	Dia. X Thread size X Len.	Amount
20910204006	8698673458581	6 X 40 X 200 mm	5
20910224006	8698673456341	6 X 40 X 220 mm	5

Trochar Pointed Kirschner Wires^{*}

Code	Barcode	Dia. X Len.
52210300115	8698673454521	1,5 X 300 mm
52210300118	8698673454545	1,8 X 300 mm
52210300120	8698673454514	2,0 X 300 mm
52210400115	8698673454538	1,5 X 400 mm
52210400118	8698673454552	1,8 X 400 mm
52210400120	8698673454569	2,0 X 400 mm

Bayonet Pointed Kirschner Wires*

Code	Barcode	Dia. X Len.
52210300215	8698673450233	1,5 X 300 mm
52210300218	8698673450257	1,8 X 300 mm
52210300220	8698673450271	2,0 X 300 mm
52210300230	8698673441279	3,0 X 300 mm
52210400215	8698673450240	1,5 X 400 mm
52210400218	8698673450264	1,8 X 400 mm
52210400220	8698673450288	2,0 X 400 mm

Olive Kirschner Wires*

Code	Barcode	Dia. X Len.
52310300015	8699931026283	1,5 X 300 mm
52310300018	8698673453753	1,8 X 300 mm
52310300020	8698673453777	2,0 X 300 mm
52310370018	8699931025156	1,8 X 370 mm
52310400015	8698673453746	1,5 X 400 mm
52310400018	8698673453760	1,8 X 400 mm
52310400020	8698673453784	2,0 X 400 mm

Instruments

Code	Barcode	Description	Amount
22310200032	8698673450455	BONE DRILL 3.2 X 200 MM	2
22310200045	8698673450493	BONE DRILL 4.5 X 200 MM	2
04013005035	8699931017144	RATCHED L ALLEN Ø 3.5 - Ø5 MM	2
05005030061	8698673493469	WRENCH 10 MM	2
04025000030	8698673490666	FEMUR & TIBIA FIX. DRILL SLEEVE Ø 3.2 X 200 MM	1
04025000020	8698673490680	FEMUR & TIBIA FIX. DRILL SLEEVE Ø 4.5 X 200 MM	1
04025000010	8698673490673	DRILL GUIDE (SHORT)	1
05005030062	8698673495135	L WRENCH	1
02345020000	8698673493506	WIRE CUTTER	1
04015000600	8698673492523	5-6 MM UNIVERSAL SCHANZ T-HANDLE	1
05005010020	8698673493483	WIRE TENSIONER SIMPLE	1
05005010030	8698673496972	CYLINDER TENSIONER	1
08050000011	8698673496507	STEEL RULER 400 MM	1

Pediatric Products



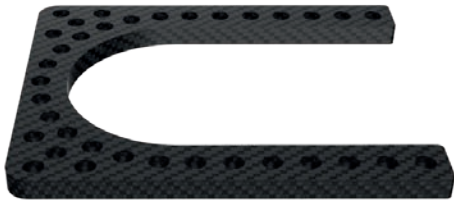
Pediatric Half Ring (Carbon Fiber)

Code	Barcode	Size	Amount
54180000080	8680858426140	80 mm	*
54180000090	8680858426157	90 mm	*
54180000100	8680858426164	100 mm	*
54180000110	8680858426171	110 mm	*
54180000120	8680858426188	120 mm	*
54180000140	8680858426195	140 mm	*
54180000160	8680858426270	160 mm	*



Pediatric C (5/8) Ring (Carbon Fiber)

Code	Barcode	Size	Amount
54180580080	8680858426218	80 mm	*
54180580090	8680858426225	90 mm	*
54180580100	8680858426232	100 mm	*
54180580110	8680858426249	110 mm	*
54180580120	8680858426256	120 mm	*
54180580140	8680858426263	140 mm	*
54180580160	8680858426270	160 mm	*



Pediatric Foot Ring (Fiber Carbon)

Code	Barcode	Size	Amount
54180100080	8680858426287	80 mm	*
54180100090	8680858426294	90 mm	*
54180100100	8680858426300	100 mm	*
54180100110	8680858426317	110 mm	*
54180100120	8680858426324	120 mm	*
54180100140	8680858426331	140 mm	*
54180100160	8680858426348	160 mm	*



Pediatric Half Pin Supporting Cubes

Code	Barcode	Hole	Amount
51950000801	8680858426393	1	*
51950000802	8680858426409	2	*
51950000803	8680858426416	3	*
51950000804	8680858426423	4	*
51950000805	8680858426430	5	*
51950000806	8680858426447	6	*



Pediatric Schanz Adaptor

Code	Barcode	Type	Amount
51850000803	8680858426362	Ø 3 MM	*
51850000804	8680858426379	Ø 4 MM	*
51850000805	8680858426386	Ø 5 MM	*



Pediatric Trans-Angled Pin Fixation Bolt

Code	Barcode	Type	Length	Amount
52051003200	8699931004052	Threaded	40 mm	*
52051004200	8699931004069	Threaded	50 mm	*
52052000032	8699931004076	Polygonal	40 mm	*
52052000042	8699931004083	Polygonal	50 mm	*



Pediatric Polyaxial Pin Fixation Bolt

Code	Barcode	Type	Length	Amount
41511000040	8699931013511	Threaded	40 mm	*
41511000050	8699931012651	Threaded	50 mm	*
41512000040	8699931012422	Polygonal	40 mm	*
41512000050	8699931012668	Polygonal	50 mm	*



Pediatric Special Pin Fixator Bolt (Serrated)

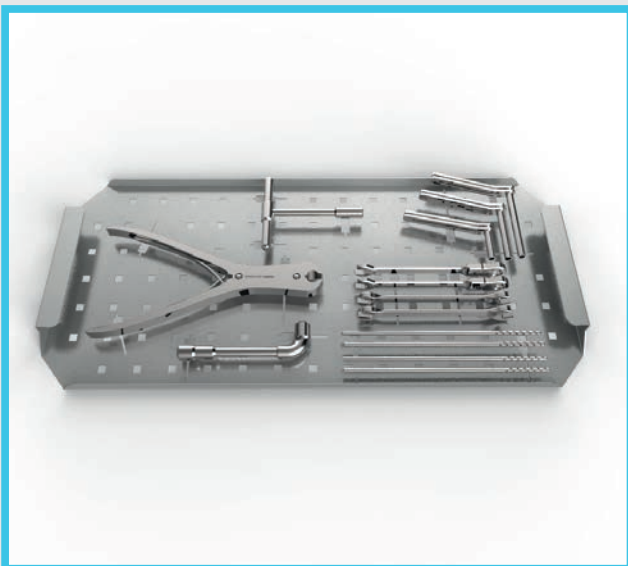
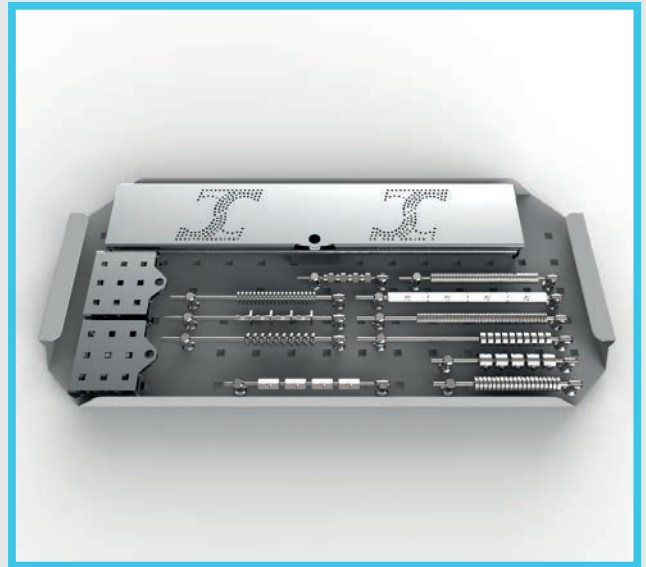
Code	Barcode	Amount
51950000300	8698673453890	*

Schanz Pin Cortical Threaded

Code	Barcode	Dia.X Thread sizeX Len.	Amount
20920062003	8698673455306	3 X 20 X 60 mm	*
20920082003	8698673455313	3 X 20 X 80 mm	*
20920102503	8698673455320	3 X 25 X 100 mm	*
20921002003	8699931022018	3 X 20 X 120 mm	*
20920072004	8698673458741	4 X 20 X 70 mm	*
20920082004	8698673455337	4 X 20 X 80 mm	*
20920102004	8698673455344	4 X 20 X 100 mm	*
20920122504	8698673455368	4 X 25 X 120 mm	*
20921402504	8699931028607	4 X 25 X 140 mm	*

Ilizarov EF-01 Set List

Container 1



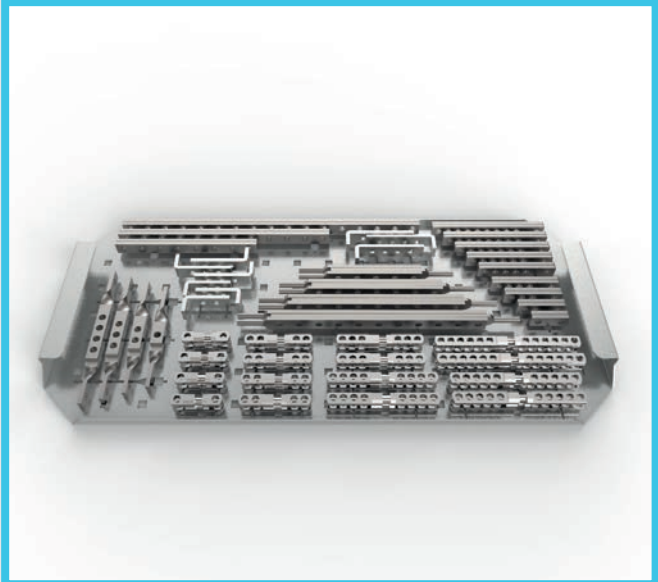
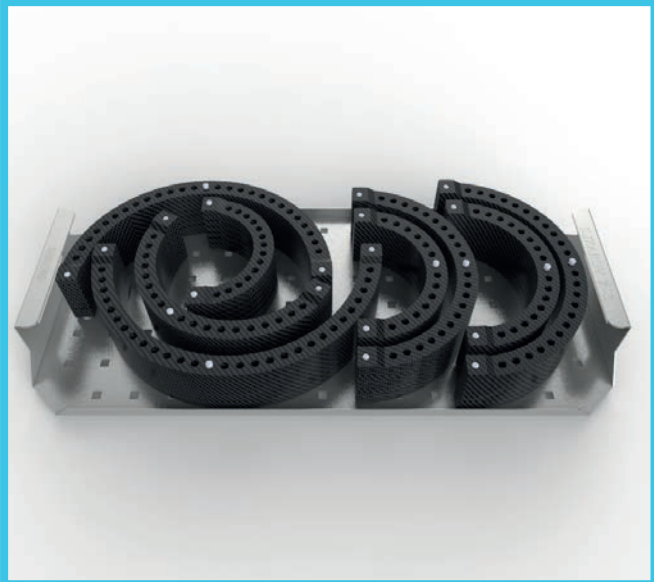
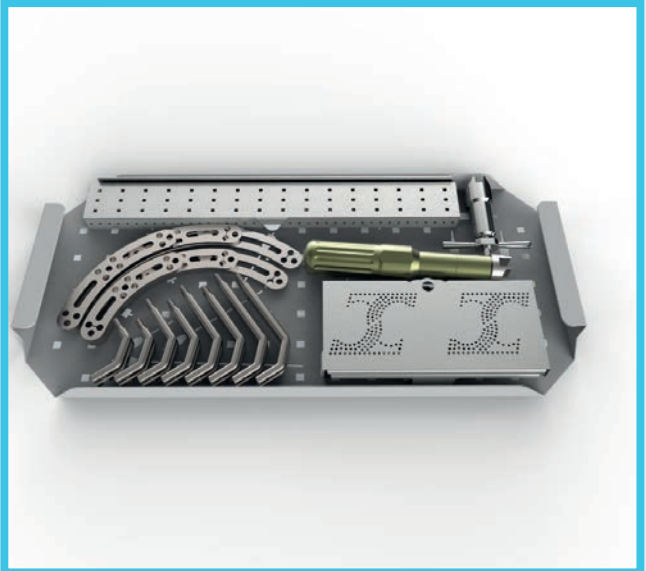
Code	Barcode	Description	Amount
00000602100	8699931024081	ILIZAROV RING TRAY	1
50140000008	8698673452121	HALFRING (AL. ALLOY)80 MM	8
50140000010	8698673452138	HALFRING (AL. ALLOY) 100 MM	8
50140000012	8698673452152	HALFRING (AL. ALLOY) 120 MM	8
50140000014	8698673452176	HALFRING (AL. ALLOY) 140 MM	8
50140000016	8698673452190	HALFRING (AL. ALLOY) 160 MM	8
50140000018	8698673452213	HALFRING (AL. ALLOY) 180 MM	8
50140000020	8698673452220	HALFRING (AL. ALLOY) 200 MM	8
50140000022	8698673452237	HALFRING (AL. ALLOY) 220 MM	8
50240000080	8698673450011	5\8 C RING AL. ALLOY 80 MM	1
50240000010	8698673450028	5\8 C RING AL. ALLOY 100 MM	1
50240000012	8698673450042	5\8 C RING AL. ALLOY 120 MM	1
50240000014	8698673450066	5\8 C RING AL. ALLOY 140 MM	1
50240000016	8698673450080	5\8 C RING AL. ALLOY 160 MM	1
50240000018	8698673450103	5\8 C RING AL. ALLOY 180 MM	1
50240000020	8698673450110	5\8 C RING AL. ALLOY 200 MM	1
50240000022	8698673450127	5\8 C RING AL. ALLOY 220 MM	1

Code	Barcode	Description	Amount
00000602200	8699931024098	ILIZAROV BOLT TRAY	1
51850000106	8698673453692	NUT M6	100
51750000206	8698673454200	TEFLON NUT M6	80
52650000200	8698673456969	UNIVERSAL HALF HINGE	4
52650000300	8698673453678	MULTIPLE ANGLED UNIVERSAL HALF HINGE	4
51750000716	8698673450912	CONICAL COUPLE	20
51750000616	8698673450929	CONICAL COUPLE	20
51750000216	8698673456983	WASHER 16 MM	100
51750000116	8698673453876	SERRATED WASHER	70
51850000505	8698673458987	SCHANZ ADAPTOR 5 MM	5
51850000506	8698673453845	SCHANZ ADAPTOR 6 MM	5
51750000416	8698673454019	SPECIAL WASHER SHORT	20
51750000516	8698673453982	SLOTED WASHER	20
52750000002	8698673450639	BUSHING	5
52750200001	8698673454378	THREADED SOCKETS	4
52750200011	8698673454385	THREADED SOCKETS	4
51850000406	8698673453838	QUADRAGONAL NUT SHORT	4
52150120006	8698673450295	BOLTS M6 12 MM	50
52150160006	8698673450301	BOLTS M6 16 MM	50
52150200006	8698673450318	BOLTS M6 20 MM	50

Code	Barcode	Description	Amount
0000602300	8699931024104	ILIZAROV INSTRUMENT TRAY	1
22310200032	8698673450455	BONE DRILL 3.2 X 200 MM	2
22310200045	8698673450493	BONE DRILL 4.5 X 200 MM	2
03550020032	8680858408658	FEMUR & TIBIA FIX. DRILL SLEEVE Ø 3.2 X 200 MM	1
03550020045	8680858408665	FEMUR & TIBIA FIX. DRILL SLEEVE Ø 4.5 X 200 MM	1
04025000030	8698673490666	FEMUR & TIBIA FIX. SCHANZ GUIDE Ø 5 MM	1
04025000020	8698673490680	FEMUR & TIBIA FIX. SCHANZ GUIDE Ø 6 MM	1
04013005035	8699931017144	RATCHED L ALLEN Ø3.5 - Ø5 MM	2
04015000025	8699931010725	ALLEN WRENCH Ø 2.5 MM	1
05005030061	8698673493469	WRENCH Ø 10 MM	2
05005030062	8698673495135	L WRENCH	1
02345020000	8698673493506	PLATE-WIRE CUTTER UP TO Ø 3 MM	1
04015000600	8698673492523	5-6 MM UNIVERSAL SCHANZ T HANDLE	1
05005030019	8680858432011	WRENCH Ø 19 MM	2
05005030010	8680858432004	Ø10 SOCKET WRENCH	2

Code	Barcode	Description	Amount
0000602800	8699931017779	ILIZAROV SCHANZ TRAY	1
52050009005	8698673454507	TRANSLATION ROTATION BLOCK	3
51950000701	8698673452053	HALFPIN SUPPORTING CUBES 1 HOLES	2
51950000702	8698673452060	HALFPIN SUPPORTING CUBES 2 HOLES	2
51950000703	8698673452077	HALFPIN SUPPORTING CUBES 3 HOLES	2
51950000704	8698673452084	HALFPIN SUPPORTING CUBES 4 HOLES	2
51950000705	8699931012408	HALFPIN SUPPORTING CUBES 5 HOLES	2
51950000706	8699931013504	HALFPIN SUPPORTING CUBES 6 HOLES	2
51950000001	8698673485617	CUBE SCREW	10
51950000100	8698673453685	MULTIPLE PIN FIXATION BOLT	1
51950000200	8698673456976	UNIVERSAL PIN FIXATION BOLT WITH FOUR	1
51950000600	8698673452091	HEXAGONAL PIN FIXATION BOLT SINGLE	3
51950000500	8698673453999	SPECIAL PIN FIXATOR BOLT SERRATED	10
21010153005	8698673454866	DAF SCHANZ PIN CANCELLOUS THRD. 5X30X150	5
21010504005	8698673454873	DAF SCHANZ PIN CANCELLOUS THRD. 5X40X150	5
21010804005	8698673454880	DAF SCHANZ PIN CANCELLOUS THRD. 5X40X180	5
21010154006	8698673425002	DAF SCHANZ PIN CANCELLOUS THRD. 5X40X160	5
21012004005	8698673454897	DAF SCHANZ PIN CANCELLOUS THRD. 5X40X200	5
21010224005	8698673454903	DAF SCHANZ PIN CANCELLOUS THRD. 5X40X220	5
20910150205	8699931024937	SCHANZ PIN (S.S) 5X20X150 MM	5
20910160205	8699931024944	SCHANZ PIN (S.S) 5X20X160 MM	5
20910180205	8699931024951	SCHANZ PIN (S.S) 5X20X180 MM	5
20910204005	8698673456228	DAF SCHANZ PINCORTICAL THREADED 5X40X200	5
21011502006	8699931013917	SCHANZ PIN Ø6X20X150 MM	5
21011602006	8699931013924	SCHANZ PIN Ø6X20X160 MM	5
21011802006	8699931013931	SCHANZ PIN Ø6X20X180 MM	5
21010504006	8698673454989	DAF SCHANZ PIN CANCELLOUS THRD. 6X40X150	5
21010604006	8698673457195	DAF SCHANZ PIN CANCELLOUS THRD. 6X40X160	5
21010804006	8698673454996	DAF SCHANZ PIN CANCELLOUS THRD. 6X40X180	5
21012004006	8698673455009	DAF SCHANZ PIN CANCELLOUS THRD. 6X40X200	5
21012204006	8698673455016	DAF SCHANZ PIN CANCELLOUS THRD. 6X40X220	5
20910204006	8698673458581	DAF SCHANZ PINCORTICAL THREADED 6X40X200	5
20910224006	8698673456341	DAF SCHANZ PINCORTICAL THREADED 6X40X220	5

Container 2



Code	Barcode	Description	Amount
00000601700	8699931024067	ILIZAROV ROD TRAY	1
50840500000	8698673454262	TELESCOPIC ROD 50 MM (CRNI + AL. ALLOY)	4
50840100000	8698673454217	TELESCOPIC ROD 100 MM (CRNI + AL. ALLOY)	4
50840150000	8698673454231	TELESCOPIC ROD 150 MM (CRNI + AL. ALLOY)	4
50550300006	8698673454361	THREADED RODS 300 MM	9
50550250006	8698673454354	THREADED RODS 250 MM	9
50550200006	8698673454347	THREADED RODS 200 MM	9
50550150006	8698673454330	THREADED RODS 150 MM	12
50550120006	8698673454316	THREADED RODS 120 MM	9
50550100006	8698673454309	THREADED RODS 100 MM	9
50550080006	8698673454293	THREADED RODS 80 MM	9
50550060006	8698673454286	THREADED RODS 60 MM	9

Code	Barcode	Description	Amount
00000601600	8699931024050	ILIZAROV PLATE TRAY	1
52950900002	8699931028362	HALF HINGE 90°	4
52550000001	8698673453609	MALE SUPPORT 1 HOLES(HALF HINGE)	8
52550000002	8698673453616	MALE SUPPORT 2 HOLES	8
52550000003	8698673453623	MALE SUPPORT 3 HOLES	4
52550000004	8698673453630	MALE SUPPORT 4 HOLES	4
52550000005	8699931012620	MALE SUPPORT 5 HOLES	4
52550000006	8699931012637	MALE SUPPORT 6 HOLES	4
52650000001	8698673451711	FEMALE SUPPORT 1 HOLE(HALF HINGE)	8
52650000002	8698673451728	FEMALE SUPPORT 2 HOLES	8
52650000003	8698673451735	FEMALE SUPPORT 3 HOLES	4
52650000004	8698673451742	FEMALE SUPPORT 4 HOLES	4
52650000005	8699931012644	FEMALE SUPPORT 5 HOLES	4
52650000006	8699931013528	FEMALE SUPPORT 6 HOLES	4
50950380002	8698673450943	CONNECTION PLATE 2 HOLES	2
50950490003	8698673450950	CONNECTION PLATE 3 HOLES	2
50950600004	8698673450967	CONNECTION PLATE 4 HOLES	2
50950710005	8698673450974	CONNECTION PLATE 5 HOLES	2
50950820006	8698673450981	CONNECTION PLATE 6 HOLES	2
50950930007	8698673450998	CONNECTION PLATE 7 HOLES	2
50951040008	8698673451001	CONNECTION PLATE 8 HOLES	2
50951150009	8698673451018	CONNECTION PLATE 9 HOLES	2
50951260010	8698673450936	CONNECTION PLATE 10 HOLES	2
51151310005	8698673451124	CONNECTION PLATE WITH THREADED END 5 HOLES	3
51151710007	8698673451131	CONNECTION PLATE WITH THREADED END 7 HOLES	3
51152110009	8698673451148	CONNECTION PLATE WITH THREADED END 9 HOLES	3
51152510011	8698673451117	CONNECTION PLATE WITH THREADED END 11 HOLES	3
51350450012	8698673453470	L PLATE 1 X 2 HOLES	3
51350700013	8698673453487	L PLATE 1X3 HOLES	3
51350700014	8698673453494	L PLATE 1 X 4 HOLES	3
51450250001	8698673456921	TWISTED PLATE 1 HOLE	2
51450460002	8698673456938	TWISTED PLATE 2 HOLES	2
51450670003	8698673456945	TWISTED PLATE 3 HOLES	2
51450880004	8698673456952	TWISTED PLATE 4 HOLES	2
51051590008	8698673453586	LONG CONNECTION PLATE 8 HOLES	2
51052360012	8698673453548	LONG CONNECTION PLATE 12 HOLES	2
51053360017	8698673453555	LONG CONNECTION PLATE 17 HOLES	2

Code	Barcode	Description	Amount
00000601400	8699931021783	ILIZAROV FEMORAL ARC TRAY	1
04100020056	8699931018912	PROTECTIVE CAP FOR 5-6 MM SCHANZ	10
51250000012	8699931012675	OBLIQUE SUPPORT CONNECTOR XLONG	4
51250000002	8698673453708	OBLIQUE SUPPORT CONNECTOR LONG	4
51250000003	8698673453722	OBLIQUE SUPPORT CONNECTOR MEDIUM	4
51250000001	8698673453715	OBLIQUE SUPPORT CONNECTOR SHORT	4
50450600020	8699931012682	FEMORAL ARCHES 60° 200 MM	1
50450900020	8698673451810	FEMORAL ARCHES 90° 200 MM	1
50451200020	8698673451773	FEMORAL ARCHES 120° 200 MM	1
50450600025	8699931012699	FEMORAL ARCHES 60° 250 MM	1
50450900025	8698673451827	FEMORAL ARCHES 90° 250 MM	1
50451200025	8698673451780	FEMORAL ARCHES 120° 250 MM	1
05005010020	8698673493483	WIRE TENSIONER SIMPLE	1
05005010030	8698673496972	CYLINDER TENSIONER	1
52210400220	8698673450288	BAYONET POINTED WIRES 2X400 MM	20
52210400218	8698673450264	BAYONET POINTED WIRES 1,8 X 400 MM	20
52310400018	8698673453760	OLIVE WIRES 1,8 X 400 MM	10
08050000400	8680858454693	400 MM S.S SURGICAL RULER FOR L&D	1
51950000901	8698673411913	CANNULATED BOLT WIRE FIXATION	50
51950000902	8698673453906	SLOTTED BOLT WIRE FIXATION	30

optional

Code	Barcode	Description	Amount
50160000010	8698673452251	HALFRING (FIBER CARBON) 100 MM	8
50160000012	8698673452268	HALFRING (FIBER CARBON) 120 MM	8
50160000014	8698673452282	HALFRING (FIBER CARBON) 140 MM	8
50160000016	8698673452305	HALFRING (FIBER CARBON) 160 MM	8
50160000018	8698673452329	HALFRING (FIBER CARBON) 180 MM	8
50160000020	8698673452336	HALFRING (FIBER CARBON) 200 MM	8
50160000022	8698673452343	HALFRING (FIBER CARBON) 220 MM	8
50160000024	8698673452350	HALFRING (FIBER CARBON) 240 MM	8
50260000010	8698673450141	5\8 C RING CARBON FIBER 100 MM	1
50260000012	8698673450158	5\8 C RING CARBON FIBER 120 MM	1
50260000014	8698673450165	5\8 C RING CARBON FIBER 140 MM	1
50260000016	8698673450172	5\8 C RING CARBON FIBER 160 MM	1
50260000018	8698673450189	5\8 C RING CARBON FIBER 180 MM	1
50260000020	8698673450196	5\8 C RING CARBON FIBER 200 MM	1
50260000022	8698673450202	5\8 C RING CARBON FIBER 220 MM	1
50260000024	8699931014310	5\8 C RING CARBON FIBER 240 MM	1
00000601500	8699931021790	ILIZAROV CARBON RING TRAY	1
50380000012	8698673451933	FOOT RING FIBER CARBON 120 MM SHORT	*
50380000014	8698673451964	FOOT RING FIBER CARBON 140 MM SHORT	*
50380000016	8698673451988	FOOT RING FIBER CARBON 160 MM SHORT	*
50380001014	8698673451957	FOOT RING FIBER CARBON 140 MM LONG	*
50380000116	8698673451971	FOOT RING FIBER CARBON 160 MM LONG	*

Pediatric Ilizarov EF-13 Set List

TST Code	Barcode	Description	Qty
00000502210	8680858437030	ILIZAROV INSTRUMENT P. TRAY	1
22310130020	8698673450400	BONE DRILL 2.0X130 MM	2
22310200032	8698673450455	BONE DRILL 3.2 X 200 MM	2
04551080210	8699931030808	K-WIRE TUBE Ø10XØ8X210 MM	1
03550020032	8680858408658	FEMUR & TIBIA FIX. DRILL SLEEVE Ø 3.2 X 200 MM	2
02005300020	8699931019742	DRILL SLEEVE Ø2 MM	2
04051300003	8699931010138	UMEF SCHANZ GUIDE Ø 3 MM	1
04051300004	8699931010107	UMEF SCHANZ GUIDE Ø 4 MM	1
04013005035	8699931017144	RATCHED L - ALLEN Ø3.5 - Ø5 MM	2
04015000025	8699931010725	ALLEN WRENCH Ø 2.5 MM	2
04015000030	8698673490048	ALLEN WRENCH Ø 3 MM	2
04015000035	8699931021974	ALLEN WRENCH Ø 3.5 MM	2
05005030061	8698673493469	WRENCH Ø 10 MM	2
05005030062	8698673495135	L-WRENCH	1
02345020000	8698673493506	WIRE CUTTER	1
04015000300	8698673492493	3 MM UNIVERSAL SCHANZ T HANDLE	2
04015000400	8698673492509	4 MM UNIVERSAL SCHANZ T HANDLE	2
00000601400	8699931021783	ILIZAROV FEMORAL ARC TRAY	1
04100020023	8680858431977	PROTECTIVE CAP FOR 2-3 MM SCHANZ	5
04100020044	8680858431984	PROTECTIVE CAP FOR 4 MM SCHANZ	5
51250000012	8699931012675	OBLIQUE SUPPORT CONNECTOR XLONG	*
51250000002	8698673453708	OBLIQUE SUPPORT CONNECTOR LONG	*
51250000003	8698673453722	OBLIQUE SUPPORT CONNECTOR MEDIUM	4
51250000001	8698673453715	OBLIQUE SUPPORT CONNECTOR SHORT	4
50450600020	8699931012682	FEMORAL ARCHES 60° X 200 MM	1
50450900020	8698673451810	FEMORAL ARCHES 90° X 200 MM	1
50451200020	8698673451773	FEMORAL ARCHES 120° X 200 MM	1
50450600025	8699931012699	FEMORAL ARCHES 60° X 250 MM	*
50450900025	8698673451827	FEMORAL ARCHES 90° X 250 MM	*
50451200025	8698673451780	FEMORAL ARCHES 120° X 250 MM	*
05005010020	8698673493483	WIRE TENSIONER SIMPLE	1
05005010030	8698673496972	CYLINDER TENSIONER	1
52210400220	8698673450288	KIRSHNER WIRE 2 X 400 MM	20
52210400218	8698673450264	KIRSHNER WIRE 1.8 X 400 MM	20
52310400018	8698673453760	OLIVE KIRSHNER WIRE 1.8 X 400	10
08050000011	8698673496507	400 MM S.S SURGICAL RULER	1
51950000901	8698673411913	CANNULATED BOLT WIRE FIXATION	50
51950000902	8698673453906	SLOTTED BOLT WIRE FIXATION	30
00560270200	8699931024746	CONTAINER 560X270X200 MM	2

TST Code	Barcode	Description	Qty
00000502230	8680858437054	ILIZAROV SCHANZ P. TRAY	1
52050009005	8698673454507	TRANSLATION ROTATION BLOK	*
51950000801	8680858426393	PEDIATRIC HALFPIN SUPPORTING CUBES 1 HOLE	2
51950000802	8680858426409	PEDIATRIC HALFPIN SUPPORTING CUBES 2 HOLES	2
51950000803	8680858426416	PEDIATRIC HALFPIN SUPPORTING CUBES 3 HOLES	2
51950000804	8680858426423	PEDIATRIC HALFPIN SUPPORTING CUBES 4 HOLES	2
51950000805	8680858426430	PEDIATRIC HALFPIN SUPPORTING CUBES 5 HOLES	2
51950000806	8680858426447	PEDIATRIC HALFPIN SUPPORTING CUBES 6 HOLES	2
51950000100	8698673453685	MULTIPLE PIN FIXATION BOLT	1
51950000200	8698673456976	UNIVERSAL PIN FIXATION BOLT WITH FOUR	1
51950000600	8698673452091	HEXAGONAL PIN FIXATOR BOLTE SINGLE	3
51950000300	8698673453890	PEDIATRIC SPECIAL PIN FIXATOR BOLT	10
20910602003	8698673455887	DAF SCHANZ PINCORTICAL THREADED 3X20X60	8
20910802003	8698673455894	DAF SCHANZ PINCORTICAL THREADED 3X20X80	8
20910002003	8698673458543	DAF SCHANZ PINCORTICAL THREADED 3X20X100	8
20910202003	8698673455900	DAF SCHANZ PINCORTICAL THREADED 3X20X120	8
20910702004	8698673458604	DAF SCHANZ PINCORTICAL THREADED 4X20X70	8
20910802004	8698673455962	DAF SCHANZ PINCORTICAL THREADED 4X20X80	8
20910002004	8698673473317	DAF SCHANZ PINCORTICAL THREADED 4X20X100	8
20910202504	8698673456020	DAF SCHANZ PINCORTICAL THREADED 4X25X120	8
20910142504	8698673456037	DAF SCHANZ PINCORTICAL THREADED 4X25X140	8
00000601600	8699931024050	ILIZAROV PLATE TRAY	1
52950900002	8699931028362	HALF HINGE 90°	*
52550000001	8698673453609	MALE SUPPORT 1 HOLE (HALF HINGE)	8
52550000002	8698673453616	MALE SUPPORT 2 HOLES	8
52550000003	8698673453623	MALE SUPPORT 3 HOLES	4
52550000004	8698673453630	MALE SUPPORT 4 HOLES	4
52550000005	8699931012620	MALE SUPPORT 5 HOLES	*
52550000006	8699931012637	MALE SUPPORT 6 HOLES	*
52650000001	8698673451711	FEMALE SUPPORT 1 HOLE (HALF HINGE)	8
52650000002	8698673451728	FEMALE SUPPORT 2 HOLES	8
52650000003	8698673451735	FEMALE SUPPORT 3 HOLES	4
52650000004	8698673451742	FEMALE SUPPORT 4 HOLES	4
52650000005	8699931012644	FEMALE SUPPORT 5 HOLES	*
52650000006	8699931013528	FEMALE SUPPORT 6 HOLES	*
50950380002	8698673450943	CONNECTION PLATE 2 HOLES	2
50950490003	8698673450950	CONNECTION PLATE 3 HOLES	2
50950600004	8698673450967	CONNECTION PLATE 4 HOLES	2
50950710005	8698673450974	CONNECTION PLATE 5 HOLES	2
50950820006	8698673450981	CONNECTION PLATE 6 HOLES	*
50950930007	8698673450998	CONNECTION PLATE 7 HOLES	*
50951040008	8698673451001	CONNECTION PLATE 8 HOLES	*
50951150009	8698673451018	CONNECTION PLATE 9 HOLES	*
50951260010	8698673450936	CONNECTION PLATE 10 HOLES	*
51151310005	8698673451124	CONNECTION PLATES WITH THREADED END 5 HLS	*
51151710007	8698673451131	CONNECTION PLATES WITH THREADED END 7 HLS	*
51152110009	8698673451148	CONNECTION PLATES WITH THREADED END 9 HLS	*
51152510011	8698673451117	CONNECTION PLATES WITH THREADED END 11 HLS	*
51350450012	8698673453470	L PLAK 1 X 2 HOLES	3
51350700013	8698673453487	L PLAK 1 X 3 HOLES	3
51350700014	8698673453494	L PLAK 1 X 4 HOLES	3
51450250001	8698673456921	TWISTED PLATES 1 HOLE	*
51450460002	8698673456938	TWISTED PLATES 2 HOLES	*
51450670003	8698673456945	TWISTED PLATES 3 HOLES	*
51450880004	8698673456952	TWISTED PLATES 4 HOLES	*
51051590008	8698673453586	LONG CONNECTION PLATES 8 HOLES	*
51052360012	8698673453548	LONG CONNECTION PLATES 12 HOLES	*
51053360017	8698673453555	LONG CONNECTION PLATES 17 HOLES	*
* TST Code	Barcode	Description	
20920062003	8698673455306	DAF SCHANZ PIN CORT.THRD.(TI) 3X20X 60	
20920082003	8698673455313	DAF SCHANZ PIN CORT.THRD.(TI) 3X20X 80	
20920102503	8698673455320	DAF SCHANZ PIN CORT.THRD.(TI) 3X25X100	
20921002003	8699931022018	DAF SCHANZ PIN CORT.THRD.(TI) 3X20X120	
20920072004	8698673458741	DAF SCHANZ PIN CORT.THRD.(TI) 4X20X 70	
20920082004	8698673455337	DAF SCHANZ PIN CORT.THRD.(TI) 4X20X 80	
20920102004	8698673455344	DAF SCHANZ PIN CORT.THRD.(TI) 4X20X100	
20920122004	8699931010190	DAF SCHANZ PIN CORT.THRD (TI) 4X20X120	
20921402504	8699931028607	DAF SCHANZ PIN CORT.THRD.(TI) 4X25X140	

TST Code	Barcode	Description	Qty
00000502240	8680858437061	ILIZAROV RING P. TRAY	1
50140000008	8698673452121	HALFRING (AL. ALLOY) 80 MM	8
50140000010	8698673452138	HALFRING (AL. ALLOY) 100 MM	8
50140000012	8698673452152	HALFRING (AL. ALLOY) 120 MM	8
50140000014	8698673452176	HALFRING (AL. ALLOY) 140 MM	8
50140000016	8698673452190	HALFRING (AL. ALLOY) 160 MM	8
50240000080	8698673450011	5\8 C RING AL. ALLOY 80 MM	1
50240000010	8698673450028	5\8 C RING AL. ALLOY 100 MM	1
50240000012	8698673450042	5\8 C RING AL. ALLOY 120 MM	1
50240000014	8698673450066	5\8 C RING AL. ALLOY 140 MM	1
50240000016	8698673450080	5\8 C RING AL. ALLOY 160 MM	1
TST Code	Barcode	Description	Qty
00000602200	8699931024098	ILIZAROV BOLT TRAY	1
51850000106	8698673453692	NUT	100
51750000206	8698673454200	TEFLON NUT M6	80
52650000200	8698673456969	UNIVERSAL HALF HINGE	4
52650000300	8698673453678	MULTIPLE ANGLED UNIVERSAL HALF HINGE	4
51750000716	8698673450912	CONICAL COUPLE	20
51750000616	8698673450929	CONICAL WASHER	20
51750000216	8698673456983	WASHER 16 MM	100
51750000116	8698673453876	SERRATED WASHER	70
51850000803	8680858426362	PEDIATRIC SCHANZ ADAPTOR 3 MM	5
51850000804	8680858426379	PEDIATRIC SCHANZ ADAPTOR 4 MM	5
51750000416	8698673454019	SPECIAL WASHER	20
51750000516	8698673453982	SLOTTED WASHER	20
52750000002	8698673450639	BUSHING	5
52750200001	8698673454378	THREADED SOCKETS	4
52750200011	8698673454385	THREADED SOCKETS LONG	4
51850000406	8698673453838	QUADRAGONAL NUT	4
52150120006	8698673450295	BOLT M6 12 MM	50
52150160006	8698673450301	BOLT M6 16 MM	50
52150200006	8698673450318	BOLT M6 20 MM	50
00000601700	8699931024067	ILIZAROV ROD TRAY	1
50840500000	8698673454262	TELESCOPIC RODS 50 MM	4
50840100000	8698673454217	TELESCOPIC RODS 100 MM	4
50840150000	8698673454231	TELESCOPIC RODS 150 MM	4
50550300006	8698673454361	THREADED ROD 300 MM	9
50550250006	8698673454354	THREADED ROD 250 MM	9
50550200006	8698673454347	THREADED ROD 200 MM	9
50550150006	8698673454330	THREADED ROD 150 MM	12
50550120006	8698673454316	THREADED ROD 120 MM	9
50550100006	8698673454309	THREADED ROD 100 MM	9
50550080006	8698673454293	THREADED ROD 80 MM	9
50550060006	8698673454286	THREADED ROD 60 MM	9
* 00000601800	8680858451760	ILIZAROV FULL RING TRAY	1
50140010080	8680858451661	FULL RING DUAL HOLE AL. 80MM	4
50140010100	8680858451678	FULL RING DUAL HOLE AL. 100 MM	4
50140010120	8680858451685	FULL RING DUAL HOLE AL. 120 MM	4
50140010140	8680858451692	FULL RING DUAL HOLE AL. 140 MM	4
50140010160	8680858451708	FULL RING DUAL HOLE AL. 160 MM	*
50140010180	8680858451715	FULL RING DUAL HOLE AL. 180 MM	*
50140010200	8680858451722	FULL RING DUAL HOLE AL. 200 MM	*
50140010220	8680858451739	FULL RING DUAL HOLE AL. 220 MM	*
50140010240	8680858451746	FULL RING DUAL HOLE AL. 240 MM	*
* 50160000008	8698673448339	HALFRING (FIBER CARBON) 80 MM	*
50160000010	8698673452251	HALFRING (FIBER CARBON) 100 MM	*
50160000012	8698673452268	HALFRING (FIBER CARBON) 120 MM	*
50160000014	8698673452282	HALFRING (FIBER CARBON) 140 MM	*
50160000016	8698673452305	HALFRING (FIBER CARBON) 160 MM	*
50260000008	8699931014303	5\8 C RING CARBON FIBER 80 MM	*
50260000010	8698673450141	5\8 C RING CARBON FIBER 100 MM	*
50260000012	8698673450158	5\8 C RING CARBON FIBER 120 MM	*
50260000014	8698673450165	5\8 C RING CARBON FIBER 140 MM	*
50260000016	8698673450172	5\8 C RING CARBON FIBER 160 MM	*
* 50340000010	8698673451872	FOOT RING 100 MM	*
50340000012	8698673451889	FOOT RING 120 MM	*
50340000014	8698673457409	FOOT RING 140 MM	*
54180100080	8680858426287	PEDIATRIC CARBON FIBER FOOT RING 80 MM	*
54180100100	8680858426300	PEDIATRIC CARBON FIBER FOOT RING 100 MM	*
54180100120	8680858426324	PEDIATRIC CARBON FIBER FOOT RING 120 MM	*



www.ttsan.com

